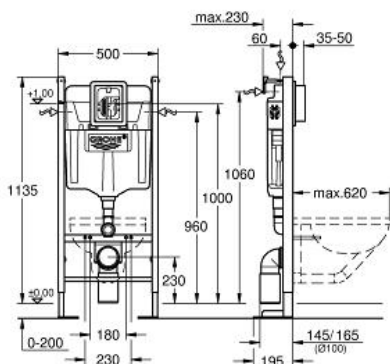


RAPID SL PROJECT  
Element for WC, 1.13 m  
installation height  
MODEL # 39145000

Pure Freude  
an Wasser



**Product Description:**

**RAPID SL PROJECT**

Element for WC, 1.13 m installation height

**Standard Specification:**

**with flushing cistern GD 2**

for on-the-wall installations or studded walls  
powder coated steel frame, self-supporting  
for dry-cladding, completely pre-assembled  
with fixed connections

lockable

fixing material

2 WC fixing bolts

fixing device for ceramic

distance of fixing bolts 180/230 mm

**NF approved**

PVC outlet bend 100 mm

spacer Ø 80 mm

inlet and outlet connecting set

**flushing cistern GD 2, 6 - 9 l, containing following features:**

adjustment ex factory 6 l and 3 l

pneumatic discharge valve offering 3 modes of  
operation: dual flush or start/stop or single flush  
water supply from left/right or back

low noise (group I acc. to German Noise Specification)

insulated against condensation

angle valve 1/2"

with push fit flexible hose union

with protecting block, for vertical use

including wall brackets 38 558 00M for on-the-wall  
installation

for mounting of small flush plates please order

revision shaft 40 911 000 (sold separately)

**Color:**

□ 39145000 chrome