



Fiche technique du produit



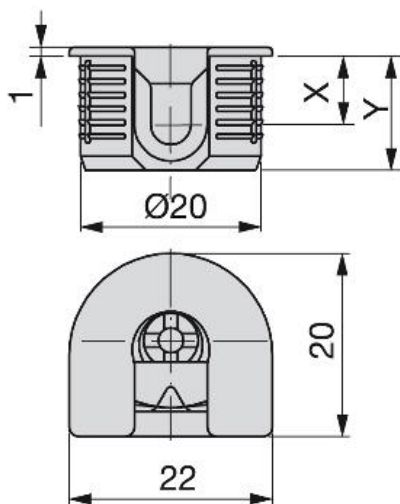
## Ferrures d'assemblage

Ferrures d'assemblage Fix Ø20

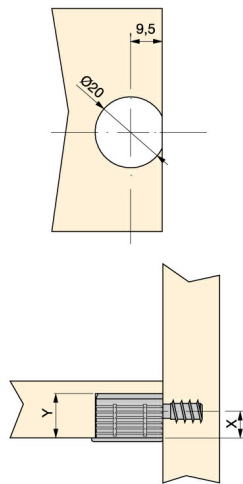
Spécifications

X	Y			Cod.	Finition
8	12.5	16	1000	<b>8470907</b>	Nickelé
9.5	14.5	19	1000	<b>8070907</b>	Nickelé

Croquis





## Montage



## Produits indispensables


### Ferrures d'assemblage



X	Y			Cod.	Finition
8	13	16	1000	<b>5054716</b>	Plastique marron
9	14	18	1000	<b>8049216</b>	Plastique marron


### Goujons



Z	F		Cod.	Finition
10	Ø3.5	1000	<b>8057205</b>	Zingué
8	Ø6	1000	<b>8905205</b>	Zingué
11	Ø6	1000	<b>8905305</b>	Zingué
8	EU M4	1000	<b>8057105</b>	Zingué
9	EU M6	1000	<b>8057005</b>	Zingué

### Goujons



Z	F		Cod.	Finition
11	Ø6	1000	<b>8083901</b>	Zamak naturel
8	Ø6	1000	<b>8084001</b>	Zamak naturel