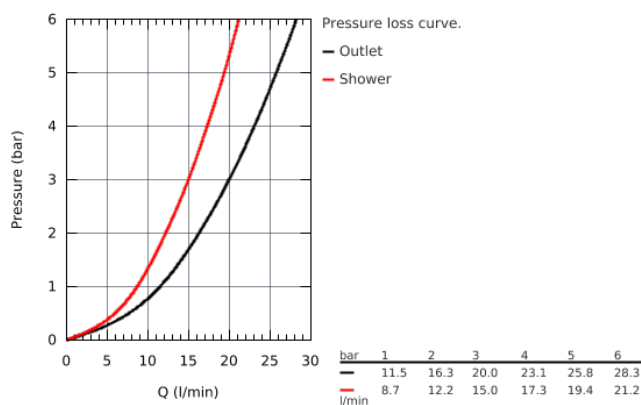
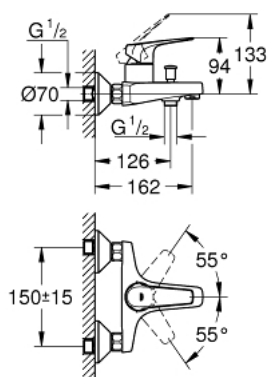


23 601 000 BAUFLOW SINGLE-LEVER BATH/SHOWER MIXER

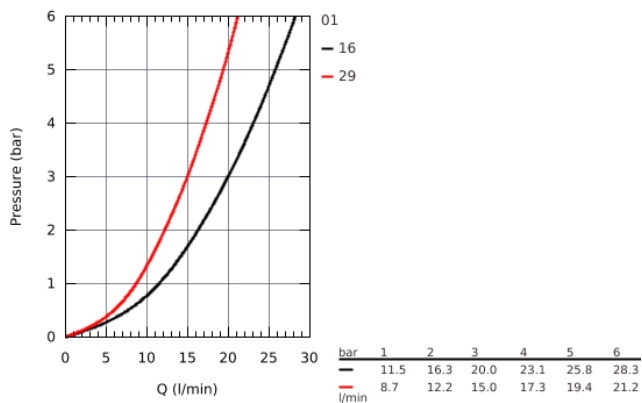
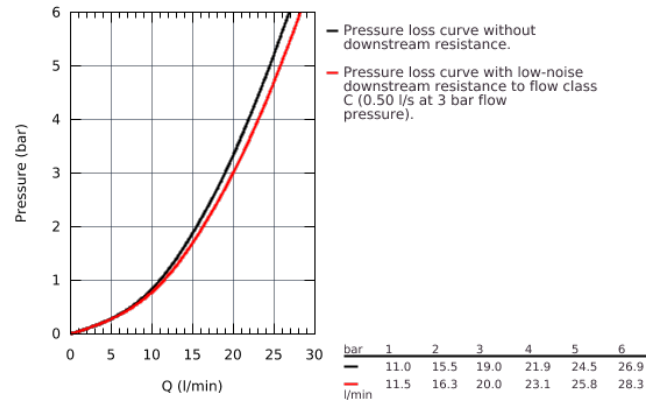
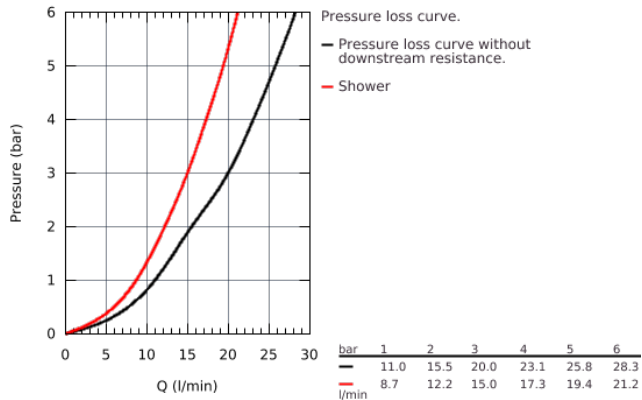
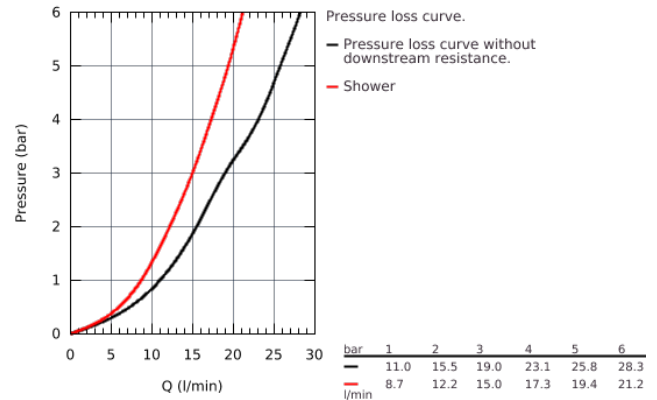
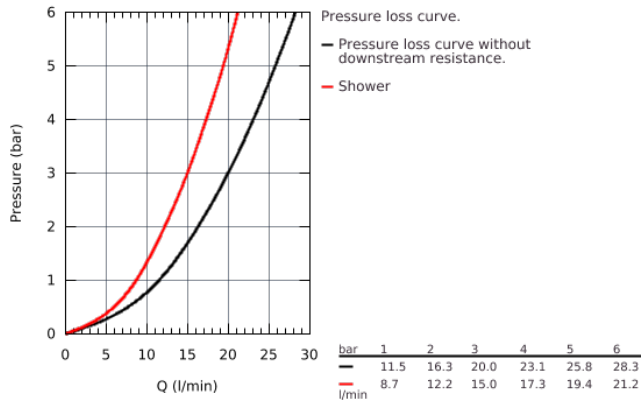


PRODUCT DESCRIPTION

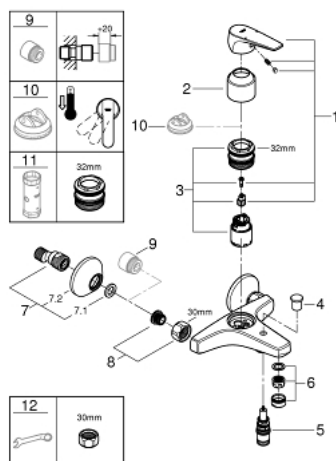
- wall mounted
- metal lever
- **GROHE Longlife** 35 mm ceramic cartridge
- **GROHE StarLight** chrome finish
- automatic diverter: bath/shower
- mousseur
- S-unions
- metal wall escutcheon



23 601 000 BAUFLOW SINGLE-LEVER BATH/SHOWER MIXER



23 601 000 **BAUFLOW SINGLE-LEVER BATH/SHOWER MIXER**



UNITS PER PACKAGE

- 1: lever (Order-nr. 46959000)
- 2: Cap (Order-nr. 46899000)
- 3: Cartridge (Order-nr. 46374000)
- 4: Diverter knob (Order-nr. 65648000)
- 5: Diverter (Order-nr. 65655000)
- 6: Mousseur (Order-nr. 13952000)
- 7: S-union (Order-nr. 12075000)
- 8: Screw connection 1/2" (Order-nr. 45044000)
- 9: Extension 3/4", 20 mm (Order-nr. 0713000M)*
- 10: Temperature limiter (Order-nr. 46375000)*
- 11: Socket spanner (Order-nr. 19332000)*
- 12: Special spanner (Order-nr. 19377000)*

* Optional accessories